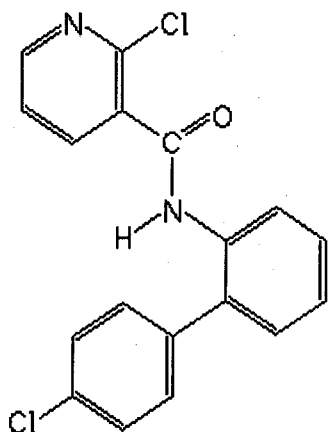


MS/MS Parameters of Pesticides

Analyte: Boscalid

CAS No.: 188425-85-6
 Formula: C₁₈H₁₂Cl₂N₂O
 Molecular mass (lowest isotopes): 342,00 amu

Structure:



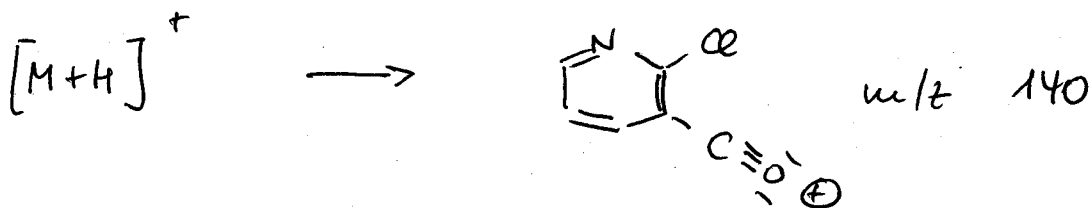
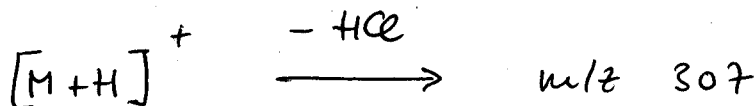
Ionisation: ESI + Quasimolecular ion: 343,0 amu = [M+H]⁺

Analyte sensitive parameter set (API 2000)

Transition	343,0 → 307,0	343,0 → 139,9
Decustering potential (DP) ^{*)}	74 V	74 V
Focusing potential (FP)	370 V	310 V
Entrance potential (EP)	10,0 V	11,0 V
Collision cell entrance potential (CEP)	20 V	20 V
Collision energy (CE)	27 V	27 V
Collision cell exit potential (CXP)	18 V	8 V

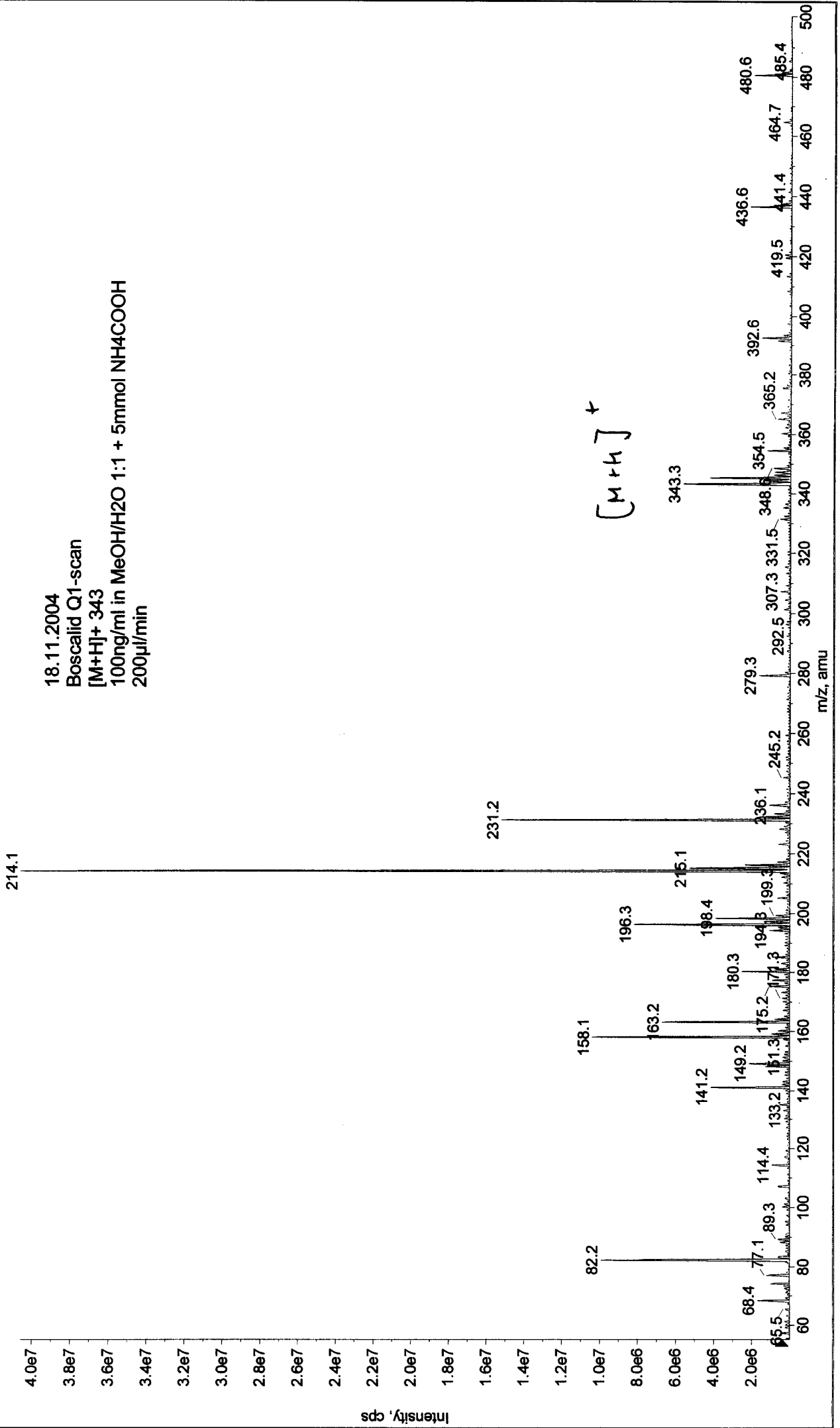
^{*)} For API 3000 and 4000 enhance DP by 20V

Fragmentation

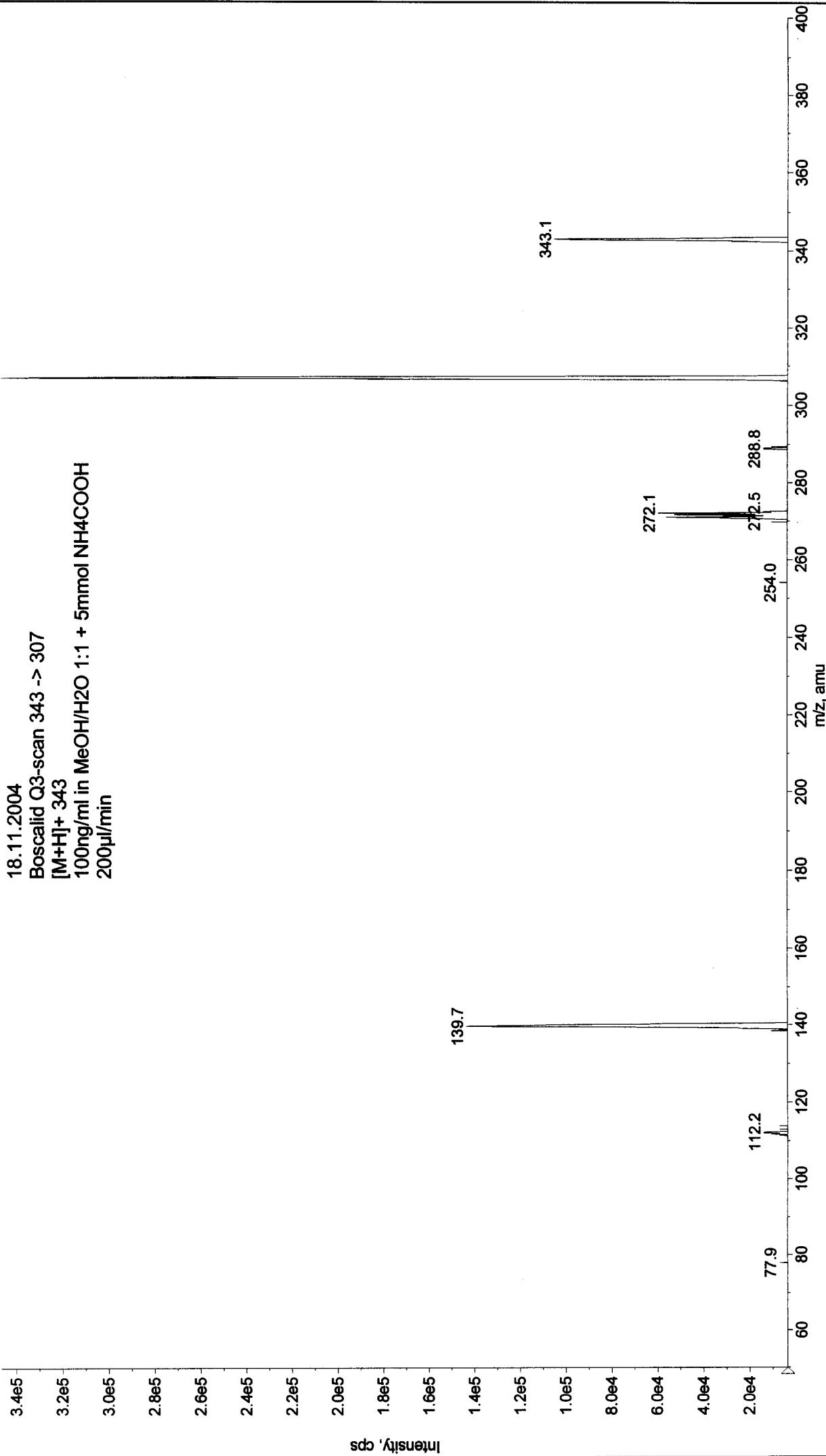


+Q1: 30 MCA scans from Sample 1 (TuneSampleID) of MT20041118090904.wiff (Turbo Spray)

Max. 4.1e7 cps



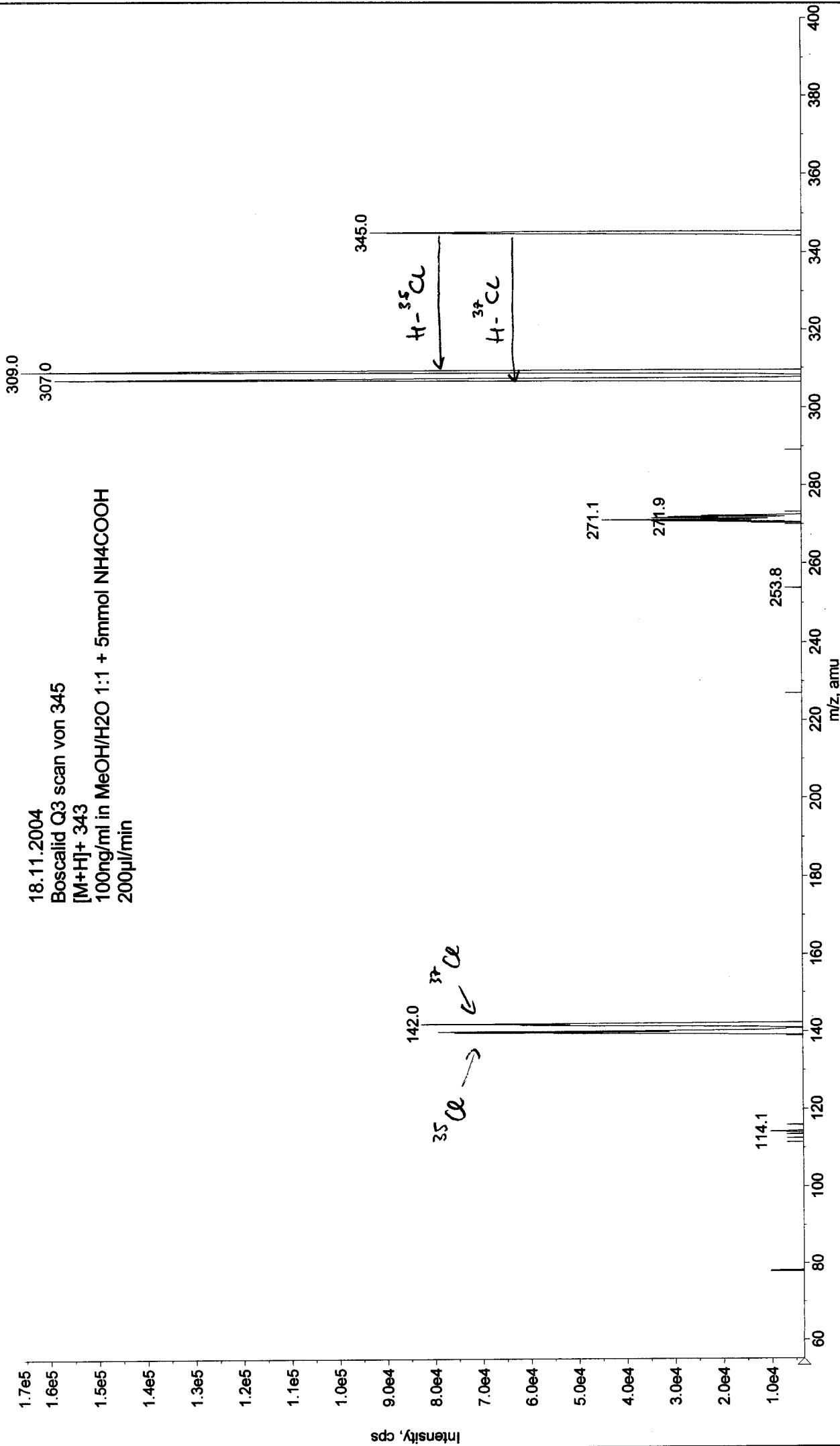
Max. 3.5e5 cps



18.11.2004
Boscalid Q3-scan 343 -> 307
[M+H]⁺ 343
100ng/ml in MeOH/H₂O 1:1 + 5mmol NH₄COOH
200µl/min

Max. 1.7e5 cps

■ +MS2 (345.00): 30 MCA scans from Sample 1 (TuneSampleID) of MT20041118092928.wiff (Turbo Spray)



Printing Time: 9:28:26
Printing Date: Thursday, November 18, 2004

Acq. Time: 09:26
Acq. Date: Thursday, November 18, 2004
Acq. File: MT20041118092633.wiff

Sample Comment:
Sample Name: TuneSampleID
Batch Name: ManualTune.bat

